



RAMANUJAN GLOBAL SCHOOL, MANESAR

WINTER HOLIDAY HOMEWORK

GRADE – VII

Dear students

Holidays are integral parts of a student's life. It is a time to explore and a time to learn in different ways. When holidays are given a meaningful direction, it results in a productive and enjoyable time. Let's use these holidays to pursue some hobbies and apply our minds creatively to learn new things and to bring a change in the environment, in our individual ways.

GENERAL INSTRUCTIONS TO BE FOLLOWED WHILE DOING HOMEWORK:

1. Take a printout of the holiday homework worksheet.
2. Homework will be assessed for the neat handwriting, presentation, creativity and submission of the work on time.
3. Parents can be facilitator at home. However, the work should be done independently by the child in his/her handwriting.

Maths

1. Solve any 10-10 questions based on the concept of lines and angles and properties of triangles in Maths Notebook.
2. Learn /Write tables 12 to 25 and Roman Numbers (1 to 200) in maths notebook.

Social Science

1. Learn ch-7 in Geography, ch-7 in History and ch-7 in civics.
2. On a political map of world mark the continents and oceans.
3. Write down the neighbouring countries and island groups.

English

1. Eng literature- learn Q/Ans and w/m of ch- 13 to 19.
2. Read and write one page daily.
3. Eng Gr.- Revise ch-11 to 14.
4. Write essays on topic ' Importance to teacher in your life and holi'.



Science

1. Make a diagram of Respiratory System on A4 size sheet.
2. Read Ch-15 &16.
3. Make a report on different types of Soils found in India.
4. Learn ch-13, 14 and 15.

हिंदी

- क) पाठ-10 से 15 के शब्दार्थ ,अभ्यास कार्य तथा प्रश्न / उत्तर याद करो।
ख) प्रश्न पत्र 1 तथा 2 किताब में करो।

हिन्दी व्याकरण

- क) पाठ-11 से 15 का अभ्यास कार्य तथा प्रश्न / उत्तर याद करो।
ख) संज्ञा , सर्वनाम ,विशेषण , क्रिया , काल, क्रियाविशेषण, अविकारी शब्द, विलोम शब्द , पर्यायवाची शब्द, लिंग , वचन, कारक, वर्ण, शब्द, वाक्य , व्याकरण ,मुहावरे तथा लोकोक्ति की परीभाषा लिखो व याद करो ।

Computer

1. Do page no. 103,104 in book and learn book exercise and Ques/Ans of ch - 9,10,11.

NOTE:- Winter break will start from 31st December 2024 to 15th January 2025 from classes Pre- Nursery to 7th.

School will reopen on Thursday,16th January 2025 as usual time. During winter vacation, the school reception will open from 8:30 a.m to 1:30 p.m so, kindly submit the fee for the month of January.

SOLVE THE WORKSHEETS GIVEN BELOW:



MATHS

Part A: Multiple Choice Questions (MCQs)

- Which of the following is not a condition for congruence of two triangles?**
 - Side-Side-Side (SSS)
 - Side-Angle-Angle (SAA)
 - Angle-Side-Angle (ASA)
 - Side-Angle-Side (SAS)
- Two triangles are congruent if:**
 - The corresponding sides and angles are equal.
 - The corresponding angles are equal, and the corresponding sides are in the same ratio.
 - The corresponding sides are equal, and the corresponding angles are in the same ratio.
 - None of the above.
- In triangle ABC, if $AB = DE$, $BC = EF$, and $AC = DF$, then triangle ABC is congruent to triangle DEF by which rule?**
 - SAS
 - SSS
 - ASA
 - AAS
- Which of the following sets of conditions is sufficient to prove two triangles congruent?**
 - Two sides and one angle
 - Two angles and one side
 - Two sides and the included angle
 - One side and two angles
- In the case of right-angled triangles, which of the following congruence criterion is used?**
 - SAS
 - RHS
 - SSS
 - AAS



Part B: True/False Questions

1. Two triangles are congruent if their corresponding angles and corresponding sides are equal.
 - True / False
2. The Angle-Side-Angle (ASA) rule is a valid criterion for triangle congruence.
 - True / False
3. If two triangles are congruent by SSS, then their corresponding angles must also be congruent.
 - True / False
4. RHS (Right-angle-Hypotenuse-Side) is applicable only for right-angled triangles.
 - True / False
5. If two triangles are congruent, the corresponding areas are always equal.
 - True / False

Part C: Solve the Problems

1. Given:

- Triangle ABC where $AB = 7$ cm, $BC = 9$ cm, and $AC = 8$ cm.
- Triangle DEF where $DE = 7$ cm, $EF = 9$ cm, and $DF = 8$ cm.

Are the two triangles congruent? If yes, by which criterion?

2. In triangle PQR, $PQ = 12$ cm, $QR = 10$ cm, and $\angle PQR = 60^\circ$. In triangle STU, $ST = 12$ cm, $TU = 10$ cm, and $\angle STU = 60^\circ$.

Prove that triangles PQR and STU are congruent using a suitable congruence criterion.

3. Given that $\triangle XYZ$ and $\triangle PQR$ are right-angled triangles with right angles at Y and Q respectively, $XY = 5$ cm, $XZ = 12$ cm, and $YZ = 13$ cm, while $PQ = 5$ cm, $QR = 12$ cm, and $PR = 13$ cm.

Show that the two triangles are congruent using the RHS criterion.

4. In $\triangle ABC$ and $\triangle DEF$, $\angle A = \angle D$, $AB = DE$, and $AC = DF$. Prove that $\triangle ABC \cong \triangle DEF$ using a congruence rule.
5. In a triangle, if two sides are congruent, and the included angle between them is also congruent to the corresponding angle of another triangle, prove that the two triangles are congruent.



English

Name: _____

Date: _____

Grade 2 Reading Comprehension Worksheet

THE INCREDIBLE GROWING JACKET

JADE MAITRE

Read the story below.

One day when Jules is at school, he takes his jacket from the hook and notices the jacket seems different. He puts it on. Its sleeves go down than they did before. The bottom of the coat is close to his knees. It looks exactly like his coat. It is dark blue. It has a nice hood. At home, Jules takes off the jacket and notices that it is not a Size 6 anymore. Now it is a Size 9. The next day at school, he sees another boy wearing a blue jacket like Jules's. It is much too small for him. A big smile comes onto his face. The other boy was 9 years old and Jules was 6 years old. Their Mums must have bought their jackets from the same shop, only in different sizes. At lunchtime, the boys took off their jackets to play soccer, and took home the wrong ones.



Answer each question.

1. What does Jules notice about his jacket?

2. How does Jules know that it looks like his coat?

3. What is the size of Jules's jacket when he takes off?

- a. Size 9 b. Size 12 c. Size 14

4. What does Jules see next day at school?

5. Why there is a smile on Jules's face?



Direct and Indirect Speech

Q. Change the following sentences from direct speech into indirect speech

a. She says, "I am a little bit nervous."

b. They said, "Sir, the time is over."

c. We said, "We go for a walk every day."

d. They said, "We take yoga classes."

e. He says, "I am happy".



Conjunctions



Add conjunctions to each sentence.

1. It started raining ____ we went inside
2. We went to the beach _____ got ice-cream.
3. The runners were tired _____ they still continued to run.
4. Lucy had to help wash the dishes ____ pack away the dishes.
5. The builders had not ____ started laying the bricks.
6. Tim neither likes apples _____ pears.
7. The family went out ____ breakfast.
8. After school they ate their snack fast ____ they could go play.
9. It was a warm _____ sunny day so they went for a swim.
10. Lilly helped her mum _____ dad paint the shed.





Science

A. Choose the correct option:

1. _____ tells the correct relation between speed (s), distance (d), time (t).

- a. $d=s/t$
- b. $s=d/t$
- c. $t= s*d$
- d. none of these

2. _____ does not show periodic motion.

- a. motion of a butterfly
- b. rotation of the earth
- c. hands of a clock
- d. strings of a sitar

3. _____ is the time taken by pendulum to complete one oscillation.

- a. speed
- b. time period
- c. amplitude
- d. distance

4. _____ is not a unit of speed.

- a. m/s
- b. km/h
- c. kmh
- d. both a. and b.

5. _____ device is not used to measure time.

- a. sand clock
- b. sundial
- c. speedometer
- d. water clock

6. When the distance travelled by a body at fixed intervals of time is not the same, is called _____.

- a. uniform motion
- b. non-uniform motion
- c. both of these
- d. none of these

7. If an athlete takes 50 sec to complete a race of 200 m. His speed is _____.

- a. 3 m/s
- b. 5 m/s
- c. 4 m/s
- d. 6 m/s

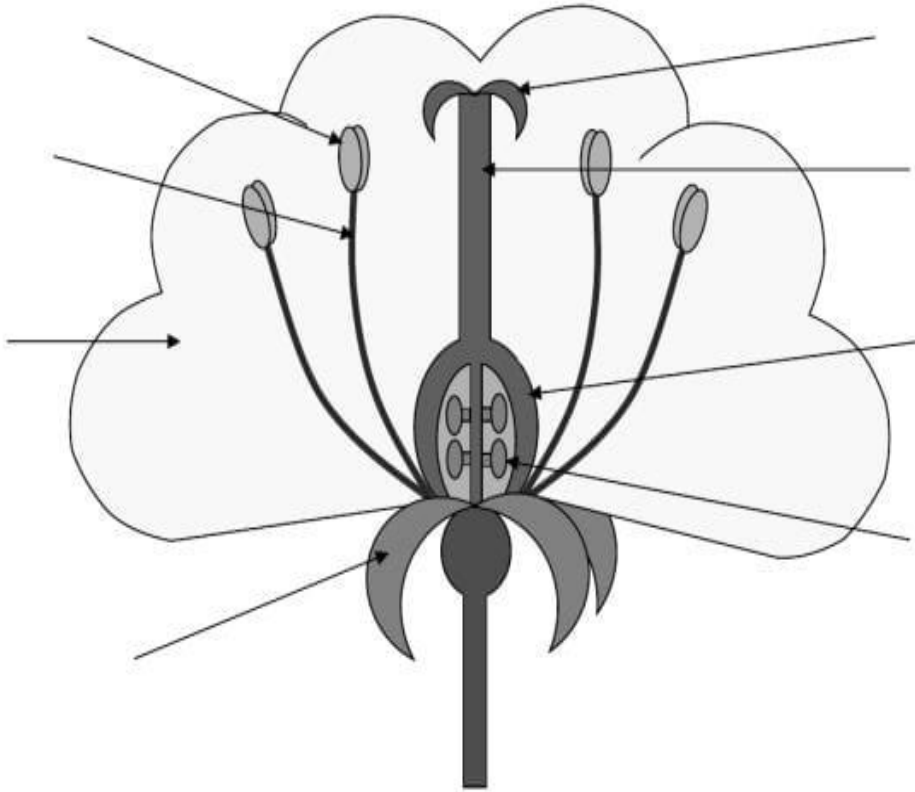
8. _____ time measuring device was used by our ancestors before the pendulum clock.

- a. wrist-watch
- b. sundial
- c. stop-watch
- d. digital clock



Structure of a flower

Label the diagram below:



Complete the word fill exercise below and table on the next sheet:

The male part of the flower is called the _____ consists of the _____ and _____. The female part of the flower is called the _____ consists of the _____, _____ and _____. The male gamete is made in the _____ and is found inside the _____ grain. The female gamete is found in the _____ and is called an _____.



हिंदी

दो मुर्गे

एक बार की बात है , दो मुर्गे एक पहाड़ी को लेकर लड़ रहे थे। वे दोनों अपनी पूरी ताकत से लड़ रहे थे, क्योंकि जो भी जीतेगा वह पहाड़ी का राजा बनेगा।

अंत में एक मुर्गा जीत गया और दूसरा मुर्गा लड़ाई में गंभीर रूप से घायल हो गया और हार गया। जीतने वाले मुर्गे ने अपनी जीत की घोषणा करने के लिए एक ऊँची उड़ान भरी और तेज आवाज में चिल्ला कर सबको अपनी जीत के बारे में बताया।

इतने में एक बाज़ उड़ता हुआ आया और इस घमण्डी मुर्गे को देखा। उसने झपट्टा मारा और मुर्गे को पकड़ कर दूर ले गया। दूसरा मुर्गा जो हार गया था वह नीचे से सब कुछ देख रहा था, वह जल्दी से बाहर आया और खुद को पहाड़ी का राजा घोषित कर दिया।

निम्नलिखित प्रश्नों के उत्तर लिखिए ।

- मुर्गे आपस में क्यों लड़ रहे थे ? उत्तर -----
- घमंडी मुर्गे को किसने पकड़ लिया ? उत्तर -----
- पहाड़ी का राजा कौन बना ? उत्तर -----
- यह कहानी किसके बारे में है ? उत्तर -----



अशुद्ध वाक्यों का संशोधन

प्रश्न:- निम्नलिखित अशुद्ध वाक्यों को शुद्ध कर के लिखे ।

१) मेरे माता जी कल आएँगे।

२) बच्चा बहुत देर से रो रही है।

३) डाकूओ के जाने के बाद सबने चेन की साँस लिया।

४) भगवान दुर्गा की पुजा चल रही है।

५) वर्षा ऋतु बहुत अच्छा होता है।

६) हमारा कक्षा में चालीस छात्र है।

७) कल अचानक ही हमारे घर बहुत से मेहमान आ गया।

८) पेड़ों पर पक्षी बैठा है।

९) तुम्हारा दर्शन दुर्लभ है।

१०) हम गरीब की मदद करनी चाहिए।

११) पार्क में एक बच्चा खेल रहे हैं।

१२) मैं आपकी पुस्तक नहीं ली।

१३) मेरे को घूमना बहुत अच्छा लगता है।

१४) सभी ने सबका काम कर लिया।

१५) क्या तुम भोजन किया?



हिन्दी कार्यपत्रिका

निम्न प्रश्नों कई सही विकल्प चुनकर उत्तर लिखिए;

1. जिन शब्दों से किसी काम के करने या होने का पता चलता है, वे शब्द कहलाते हैं -

(अ) कर्ता (ख) कर्म (ग) क्रिया (घ) धातु

2. क्रिया के मूल रूप को कहते हैं -

(अ) कर्ता (ख) कर्म (ग) क्रिया (घ) धातु

3. जो क्रियाएं कर्म की अपेक्षा रखती हैं; वे कहलाती हैं -

(अ) सकर्मक क्रिया (ख) अकर्मक क्रिया (ग) धातु

4. जो क्रियाएं कर्म की अपेक्षा नहीं रखती हैं, वे कहलाती हैं -

(अ) सकर्मक क्रिया (ख) अकर्मक क्रिया (ग) धातु

5. कर्म के आधार पर क्रिया के भेद होते हैं -

(अ) दो (ख) तीन (ग) चार (घ) पाँच

निम्न लिखित वाक्यों में क्रिया के भेद बताइए :

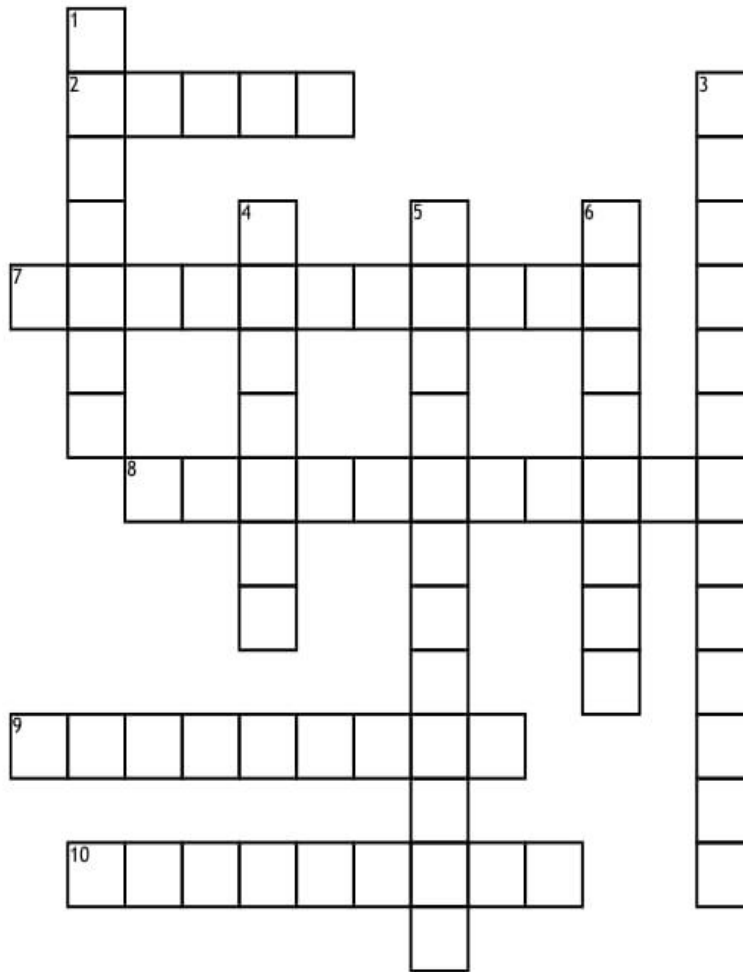
1. वह पुस्तक पढ़ता है।
2. मोहन पत्र लिख रहा है।
3. बंदर उछलता है।
4. राधा रूट गई।
5. रोगी खाँसता है।
6. दीदी स्वेटर बुन रही है।
7. मोर नाचता है।
8. मोहन भागने लगा।
9. गेंदबाज गेंद फेंक रहा है।
10. नौकरानी झाड़ू लगा रही है।



Social Science

Date: _____

Markets Around Us



Across

- _____ stores are the shopping places that are established by the same management.
- People's access to markets also depends on the _____ of the goods available.
- The _____ societies are made to reduce the dependency of the producers on the intermediaries.
- Weekly markets do not have _____ shops.
- It refers to the selling of goods to merchants in bulk for resale to consumers.

Down

- In a broad sense, 'market' is almost equal to _____.
- A group of people who are a connecting link between the producers and the consumers.
- They move from one place to another to sell their goods.
- _____ stores are the combination of number of shops under single roof.
- A _____ is a person who buys the goods from a wholesaler and sells them to buyers for self use.



Fill oceans and continents:

WORLD POLITICAL

Name : _____
Class : _____ Sec : _____ Roll No. : _____
School : _____

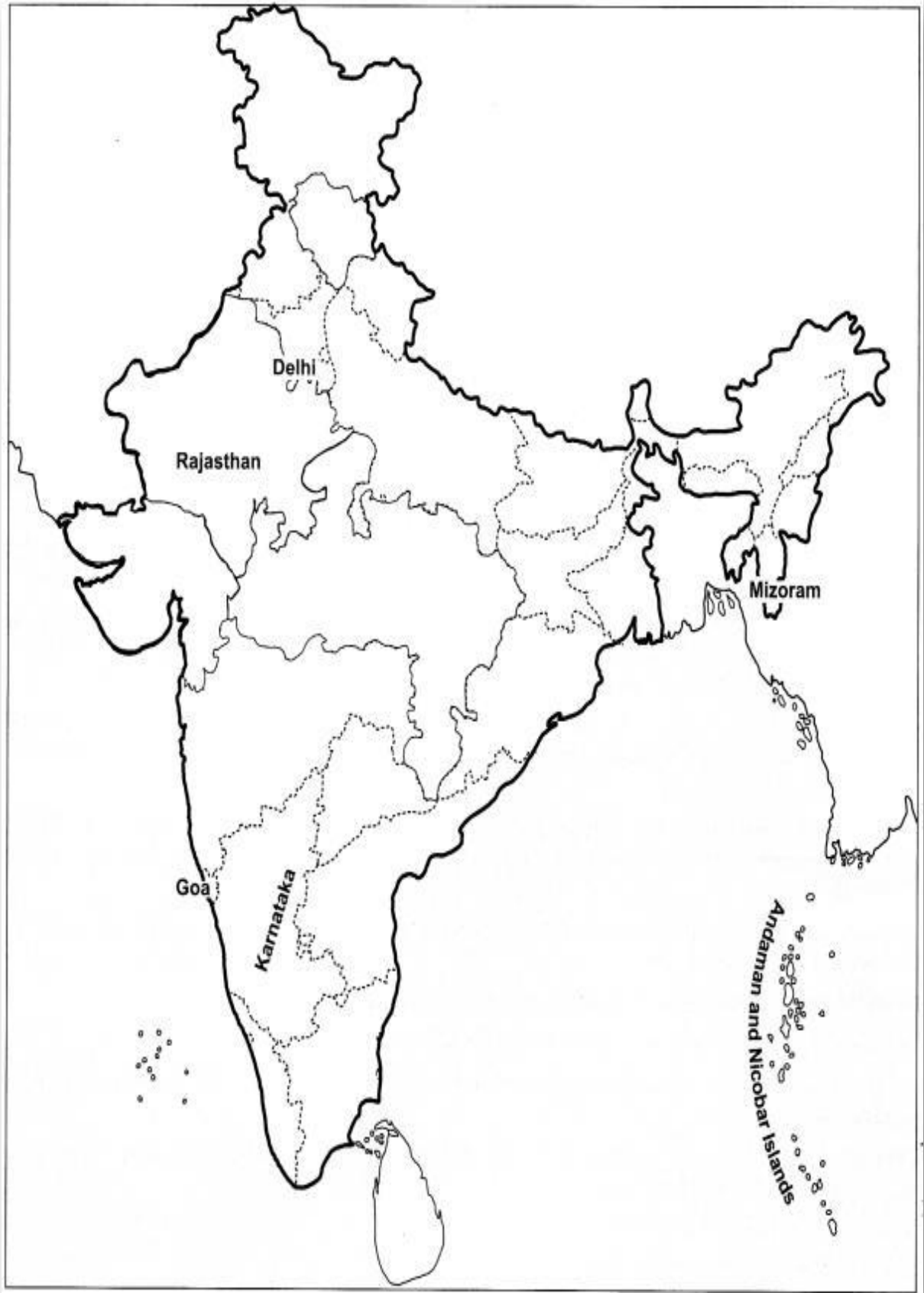
Published by: **INDIAN MAP HOUSE (PVT) LTD**
210, 212, Convent Road, Calcutta - 700 016, India
E-mail: info@indianmaphouse.com | Tel: 033-25533333 | Website: www.indianmaphouse.in

© Government of India Copyright 2011
1. The responsibility of the correctness of the map details rests with the publisher.
2. The horizontal waters of the map extend to the east to a distance of seven nautical miles, measured from the appropriate base line.
3. The External Boundary with Canada of India in the map agrees with the Revised Map maps published by the Survey of India.

Class Teacher's Signature _____



Fill states in this map:





Stay happy
Enjoy Holidays

